

# LIGHT ROAD CURB



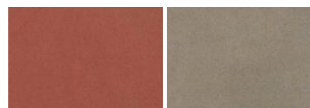
## DANE TECHNICZNE

Palett weight (kg) 1240\*

Number of pieces per pallet 20

## WZORNIK

### STANDARD SURFACE



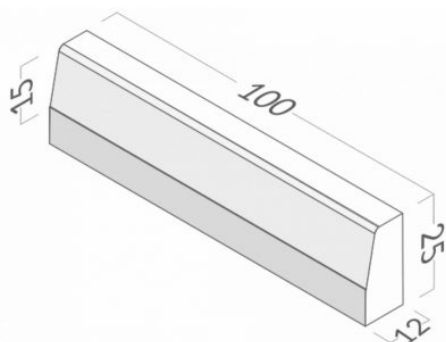
STANDARD  
SURFACE

grey



Zobacz ten produkt  
online w swoim  
smartfonie

A road curb – **12x25x100 cm** – is a popular material used to finish and protect asphalt surfaces, sidewalks lined with paving stones and residential car parks. **BRUK** curbs have been discreetly fitting into the surrounding public space for years.



## APPLICATION

Edging driveways, parking lots, roads, sidewalks, separating roads from sidewalks..

## USEFUL RECOMMENDATIONS

Installation in accordance with the construction practice, do not lay lying down. The width of joints 5-10 mm, laying on concrete benches.

## SPECIAL FEATURES

Rectangular curb beveled on one side, with rounded edges. ATTENTION: For technological reasons pallet's weight may change.

