

# BIG PLANTER



## DANE TECHNICZNE

Weight (kg/pc)	Cube: 150; Special: 370
Capacity (l)	Cube: 76; Special: 410
Wall thickness (cm)	3-5

## WZORNIK

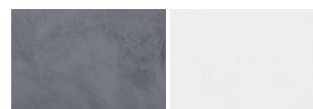
### ARCHITECTURAL CONCRETE - NATURAL SURFACE



NATURAL SURFACE

concrete natural

carbon natural



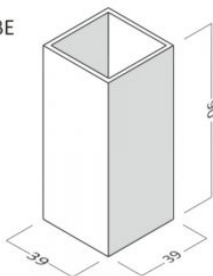
steel natural

white natural

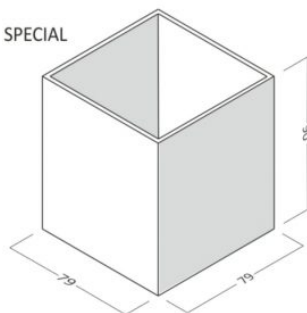


**BIG** is a system of pots with larger dimensions. Perfect for indoor and out door plants with a large scale and at larger spatial arrangements. The pot looks great in **private gardens and urban spaces**.

CUBE



SPECIAL



## USAGE

For indoor and outdoor use. Use as a flower pot.

## USEFUL RECOMMENDATIONS

Do not hit it with sharp objects. An impermeable foil should be put on the inside, up to the one third it should be filled with a 1:1 mixture of expanded clay and gravel, then filled with earth. In winter, when used outdoors, protect the ground from freezing.

## SPECIAL FEATURES

The wall thickness of products: 2-5cm. minimum grade of concrete: C 30/37.



Zobacz ten produkt online w swoim smartfonie