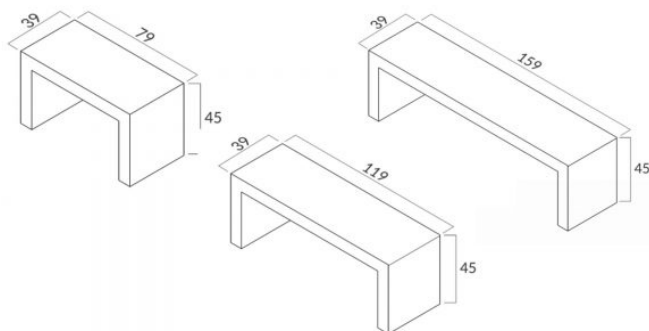


BENCH REGULAR



Regular bench is a modern **concrete bench** with a **minimalist form, geometric shapes** and right angles. The versatility of the architectural concrete seat enables it to be used as a **bench, both in private and public spaces**: a garden, a park, a city market square or a square. Regular bench is available in **3 lengths**. It is **100% handmade**.



USAGE

For indoor and outdoor use. Use as a seat.

USEFUL RECOMMENDATIONS

Do not overload above the specified maximum load, do not jump on it, do not hit with sharp objects. The product must be secured to the ground with screws driven into the dowels included in the product.

SPECIAL FEATURES

100% manufacture. Satin texture of concrete. The minimum grade of concrete: C 30/37. The products include embedded mounting dowels around the corners of the base.

DANE TECHNICZNE

Weight (kg/pc)	79M - 115; 119M - 150; 159M - 180;
Max. load (kg)	79M - 180; 119M - 350; 159M - 550;
Wall thickness (cm)	8

WZORNIK

ARCHITECTURAL CONCRETE - NATURAL SURFACE



concrete natural

carbon natural

steel natural



white natural



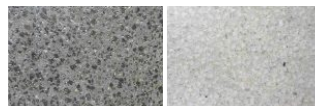
ARCHITECTURAL CONCRETE - POLISHED SURFACE



polished beige

polished yellow

polished gray



polished black

polished white



Zobacz ten produkt
online w swoim
smartfonie

