

HOLLOW POST BLOCKS STRUCTUR



These are **split face blocks** for the construction of **fence posts**. Two sizes of the elements allow the design of wider and narrower masonry structures.

The **irregular surface is attributable to the splitting technology used for their manufacturing**. As a result, they are reminiscent of natural stone. Therefore, they look very nice when juxtaposed with the greenery and, when used properly, perfectly match the architecture, as well as **gardens in modern and more traditional styles**.

The hollow wall and post blocks are intended not only for enclosing plots, but also to build **dwarf walls or decorative flower beds**. Combined with other products of the SPLIT series – palisades and steps – they are a highly creative material for the design of impressive decorations **around the house**.



USAGE

Construction of the fence posts with split face.

USEFUL RECOMMENDATIONS

Assemble the fence on the proper continuous footing. Perform the preliminary “dry” assembly. Assemble with sealing adhesive. Moisten before filling with concrete. Assemble the anchors in the concrete core. Regularly remove impurities during the assembly.

SPECIAL FEATURES

All of the sides of the hollow block are split. Available in two sizes. Consists of two elements. To be used with the hollow wall blocks of the fence system.

NOTE: due to technological reasons, the weight of the pallet is subject to change.

DANE TECHNICZNE

Pallet weight (kg)	22cmx38cm: 860kg*; 38cmx38cm: 740kg*
Number of set per pallet	22cmx38cm: 40 sets; 38cmx38cm: 24 sets
Number of layers per pallet	4

WZORNIK

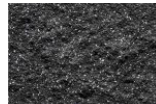
SPLIT FACE SURFACE



white split*

gray split*

sand split*



anthracite split*



*on order products



Zobacz ten produkt
online w swoim
smartfonie

